



Information on the program PPSee

Version: 1.21+

Author: Pavel Ponec, e-mail: ppsee@centrum.cz

*Do you often send pictures as an email attachment?
Do you wish to present your photos on the Internet?
When creating a photo album in a text editor, do you find it too slow?
If so, then this program is the right thing for you!*

PPSee is a software for creating picture galleries of photos taken by the digital camera, scanner etc. It also makes possible to view pictures. The created photo album can be used on your computer, however it is designed mainly for display on the Internet. Instead of photos attached to e-mails, you'd better send a link to your own web pages!

The Best Features

A brief list of interesting features of the program **PPSee** follows:

- the program uses **national languages** ([info](#)).
- the photo album provides automatic picture projection - **slide show** ([info](#)).
- to move among the pictures in the photo album you can use **navigation keys** ([info](#)).
- each of the pictures can contain your **title**, **description** and a name of **author**. These informations are stored for later use. ([info](#)).
- you can **rotate images** without any modification of the original file. ([info](#))
- the program can remove images to a trash bin and restore the images back ([info](#)).
- the photo album does not need support from any server. ([info](#)).
- the program has many **attributes** affecting the look of the created photo album ([info](#)).
- photo album is based on a valid code **XHTML 1.0 Strict**
- you can create/modify their own **templates** of the photo album ([info](#)).
- support of the scripting language **BeanShell** for greater latitude when creating the photo album. ([info](#)).
- registered users can use a **batch mode** without a graphical user interface ([info](#)).
- the program can read **EXIF** information ([info](#)).
- the program runs on the systems such as **Windows**, **Linux**, **MacOS**, **OS/2** and **Solaris**, as well as the photo album ([info](#)).
- the author does not insert any form of malware into program, including: spyware, trojans, backdoors.

Content

Information on the program PPSee.....	1
The Best Features.....	1
Content.....	1
Quick Start.....	2
Program start.....	2
Batch processing.....	3
Description of the program characteristics.....	3
Program Control.....	4
Remove files.....	4
Main screen.....	5
Directory tree.....	5
Information on files.....	5
Detailed information.....	6
Menu of the main window.....	6
Picture previews.....	6
File descriptions.....	7
Date from the parent directory.....	7
Templates.....	8
Preview parameters.....	9
Resizing method.....	10
Detail parameters.....	10
General parameters.....	11
Editor BeanShell.....	13
Program interface.....	14
Photo album user templates.....	14
Basic modifications of templates.....	14
Extended modifications of templates.....	15
Graphic interface.....	15
Tips for templates.....	16
Program parameters.....	16
Tips.....	17
And what next?.....	18
Technical Support.....	19
Disadvantages.....	19
Further development.....	19
Licence and price.....	20
Registration.....	20

Quick Start

The basic informations for quick usage of the program.

- After starting the program choose **the directory** with your pictures.
- Choose from the context menu above the chosen picture (one or a group): **Actions** -> **File description**. Here you can insert **descriptions** - both for the chosen picture and for the whole photo album.
- By the key **F5** open the dialogue box for settings of the look of the picture gallery. Here, for the last time, you can change the template or modify the look of the gallery via attributes.
- By pushing the button **Create** you will create (in the chosen directory) a new **picture gallery**.

Program start

The program runs on the operating systems such as **Windows**, **Linux**, **MacOS**, **OS/2**, **Solaris** and others with installed **Java Runtime Environment** - Standard Edition (JRE) version 1.4 or higher. The appropriate JRE can be downloaded for free e.g. from the pages <http://java.com/en/download/manual.jsp>. The program is to be started by means of the scripts, which are saved at the root of your installation. The syntax of the use of attributes in the Windows is following:

```
ppsee [<dir>] [-init <file>]
```

and in the Linux system:

```
sh ppsee.sh [<dir>] [-init <file>]
```

The square brackets indicate optional attributes. The meaning of attributes is following:

<dir> - parent directory

-init <file> - configuration text file (only registered version)

General information on the program start is stated in the file [read-me.html](#)

Batch processing

You can launch the program from command line for a batch processing - without a graphical user interface. The feature is enabled to registered users only. The syntax follows:

```
ppsee [<sourceDir>] [-init <file>] [-batch [-out <albumDir>]] [-help]
```

where:

```
ppsee - there is recommended to replace the name of the script by statement: java -Xmx96m  
-jar PPSee.jar
```

<sourceDir> - source image directory

-init <file> - configuration text file

-batch - batch mode (without a user graphical interface)

-out <albumDir> - output album directory ((will be created if necessary))

-help - quick help

Notes:

- Windows users can use a script **bin\ppsee.bat** for the batch mode, Linux users can use the original script **ppsee.sh**.
- Advanced Windows users can try to modify a script "bin\batch.vbs". The script creates a new batch file for creating galleries from all subdirectories from in a first level.

Description of the program characteristics

- The program uses national languages. The present version supports English, German and Czech, other languages are worked on. All the standard texts are written in a national language in the photo album (as for example the introduction page or the description of the navigation keys).
- The photo album contains automatic picture projection (below only *slide show*). The created *slide show* is able to cope with slow Internet connection. On this account transition to a new picture is not realized until the picture **is completely downloaded**.
- Some functions of the photo album can be operated by hotkeys, particularly transition to the next or to the previous picture, stopping or continuation of the run of the *slide show* or return to the higher level.
- To each picture you can assign *name of the picture*, its *description* and eventually *name of the author*. The descriptions of pictures are saved in an independent (text) file. The program can handle national characters (support of the character set *Unicode*).

- The program affords the opportunity to set a great amount of attributes, by which you can alter the look of the photo album. You can choose for example a set of graphic navigation keys, a picture for the background of the photo album and colour of the character but also degree of software sharpening of the picture. A detailed description of attributes is defined [further](#).
- The photo album does not need support from any server. It follows that the resulting photo album can be easily viewed from any local or network drive or you can view the photo album from a burnt out CD.
- All you need to view the photo album is an Internet browser. The album is optimized for all the most used browsers:
 - **Internet Explorer** of the Microsoft company (from the version 5.0),
 - **Mozilla** (from the version 1.0),
 - **Firefox** (from the version 1.0),
 - **Netscape** (tested on the version 7.02),
 - **Galleon** (tested on the version 1.3.3),
 - **Opera** (tested on the version 7.02)
 - and some **others**.

For run of the *slide show* you need to have *JavaScript* and *CSS* (cascade style sheets) enabled. These properties are ordinarily preset.




- Most of the modern digital cameras save many other datas to the digital picture, as for example date and time of taking the picture, exposure time, aperture and generally also the producer and type of the camera. All datas of this kind are saved to the picture in the format called *EXIF*. The program *PPSee* allows to display (optionally) some of these datas in the photo album.
- No function of the program changes the original pictures! However if you want to change the original pictures, you can activate *external editor*.
- You do not need to study definition of the language HTML or Javascript to create an operating photo album. Yet advanced users can insert HTML symbols to some (descriptive) items for a better format of the text. You can create your own [album template](#) too.
- The program is platform-independent. This means that it can run on various operating systems such as **Windows**, **Linux**, **MacOS**, **OS/2**, **Solaris** and others with installed **Java Runtime Environment - Standard Edition** version 1.4 or higher (below only JRE). The appropriate JRE can be downloaded for free for example from the pages <http://java.com/en/download/manual.jsp> .
- The program supports graphical formats **JPG**, **PNG**, **GIF** and **BMP** (the last format using the JRE version 1.5 or higher only) .

Program Control

- For cursor movement in a browser you should use keys with arrows or select a picture with the mouse.
- To go up one level higher in the directory structure push the button *Backspace*.
- For switching to detail and back use the key *Enter*.
- You can move a big detail image horizontally, if you have pressed *Ctrl* key during a mouse wheel spinning.
- Pictures can be selected by the key *Ins*. If you select directories, they will not be processed to the photo album.
- Some operations above a file can be called via its **context menu**.
- The button marked by three dots [...] generally calls **offer** of the corresponding item.
- To create a photo album push the key *F5*. Before creating the album you still have the possibility to modify the look of the album by setting attributes. In general it holds that if the value of an attribute is not reachable, even its tag (e.g. name of the author etc.) does not appear in the album. All the picture sizes are set in pixels.
-

For further information I recommend to study the individual parts of the program in detail. They are described in the following chapters.

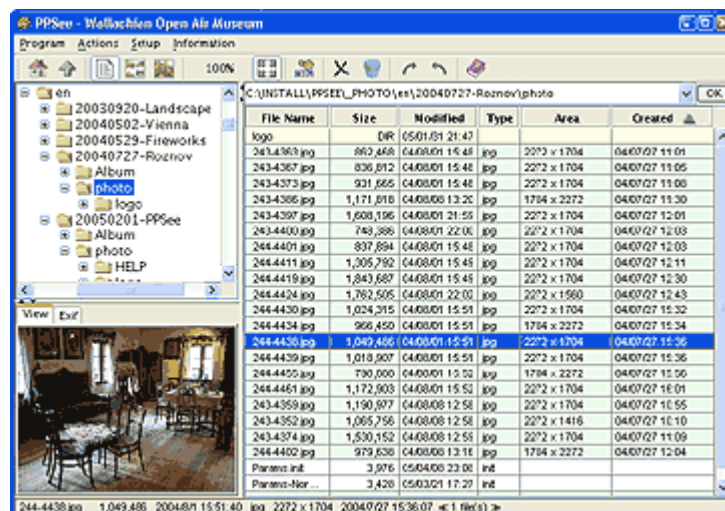
Remove files

A file remove management of **PPSee** is a different form your operating system. Files removed by **PPSee** to trash bin are moved into subdirectory called `_DELETED_FILES`. You can remove any file by a button of toolbar  for example. You can see a content of the trash bin by button , use a button  for return to back.

Removing files is intended for an easy selection of valuable images by **PPSee**. The program does not allows irrecoverable file deleting. You can delete the subdirectory `_DELETED_FILES` for example by standard tools of your operating system. The bin subdirectory is implicitly invisible in **PPSee** program. You can change a name of bin subdirectory or to adjust same more features in a Parameters frame of the program.

Main screen

The main screen is composed of three panels, whose size can be changed or it is possible to hide the panel completely (by clicking the mouse on the small black arrow located between the panels). Some activities of the program can be invoked via the context menu of an open file. To select the chosen files use the key **Ins**.



Directory tree

It lies in the left part of the screen and it enables to choose a directory. If you want to make a network drive accessible, you need to write its root on the keyboard and confirm by the button **OK**. When the root of the network drive is read to the tree structure, it is then possible to browse the directory by the standard procedure.

Information on files

The panel is located to the left of the tree. Supported graphic formats are marked in colour. The individual columns can be dragged to another position by drawing with the mouse next to the head of the column. If the column does not have an informational value for you, it can be hidden via the context menu (open it by the right mouse button on the head of the column of the table). Restoring of the hidden column is done by the same procedure. The settings of the hidden columns are saved for further run of the program. Files can be ranged as per any column by clicking on the

corresponding head.

Worth mentioning among the stated columns is *Created*. Content of the item is taken over from the EXIF information (if it is reachable). On the other hand the item *Modified* displays date of the file and it takes up the information from the file system.

Detailed information

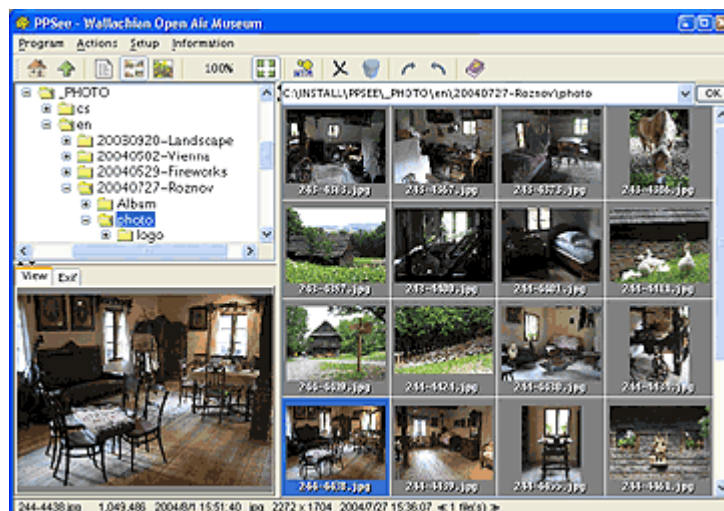
Under the directory tree there are two tabs displaying the picture preview and the EXIF information (if it is reachable).

Menu of the main window

- *Program*
 - Exit - carries out stopping of the program
- *Actions*
 - Go to Up - step one level in the direction of the root in the directory structure.
 - Show Real Image Size - changes size of the picture in detail to 100%.
 - Fit Image to Window - the picture in detail always adapts to the size of the window.
 - Show List - shows the list of the files according to the picture introduced above.
 - Show Thumbnails - small previews of pictures
 - Maximal Area - the program hides the status information and the button palette to gain larger area of the inside window.
 - File Description - shows the dialogue for inserting the textual notes to the picture and to the photo album.
 - Edit Image - calling the external graphic editor for modification of the picture.
 - Create New Photo Album - opens the panel, which enables creation of the photo album, its preview and modification of its look
 - Remove Files - Remove file to a Trash Bin.
 - **Rotate Image 90° CW** - the action does not modify the selected image(s). The rotation is not relevant for another programs. If the rotated image is modified by a bitmap editor, PPSee program will be assumed the image is rotated by the editor and the rotation flag will be cleared.
 - Rotate Image 90° CCW - the action does not modify the selected image(s).
- *Setup*
 - Change Look & Feel - the program changes its look constantly according to the accessible patterns (skins).
 - English - switches all the **navigational items** to a new language. With the initial settings this choice also affects some texts of the photo album which is being created - however it is possible to set the language explicitly in the parameters of the photo album.
 - Switching to **other languages** works the same way as described above.
 - Parameters - shows the form enabling to set [the program parameters](#).
 - Save Parameters - saves the set parameters.
 - Save Parameters As - saves the set parameters to a new file.
 - Load Parameters - loads the parameters from the file.
- *Information*
 - Help - shows this documentation
 - About - basic information on the program **PPSee**
 - Licence - shows the form enabling to show or activate the licence.

Picture previews

The screen shows previews of supported pictures. This preview does not contain directories. Equally as in the previous case you can call the context menu on the picture. Transition to the detailed picture (and back) is achieved by the key *Enter*. For further run it is not necessary to wait for display of all pictures to be completed.



File descriptions

To each file you can assign information containing the name (of the picture), description and name of the author and date of the origin. This information is saved in the current directory to the text file *.ppsee.ini*. If you select more files, you can insert information for all the selected files at once. The item *Date of origin* is assigned primarily to pictures from the scanner or screen, which do not contain EXIF information.

In the upper part of the form you should enter data common to the whole directory, in the lower part there are data related to the chosen file (or files).

Date from the parent directory

The value of this item is related to the item *Date* (from the *Directory* group). The date can inform you about beginning of an action (e.g. beginning of holiday), which is common to all the photos from the directory. Unless the item is checked, the date stated in the form is valid.

If the item is checked, the program will try to deduce the date from the directory, which is the parent

directory of the directory being viewed. This quality comes in useful when you range photos to the directories named after the date of the photo's origin.

The program deduces the date according to the following rules:

- If the first 8 characters are numerical, the program uses the first 4 characters as a year, the other two as a month and the last two as a day of the month.
- Otherwise the program assumes that the year is written in the abbreviated form. For the record of the year only two characters are used according to the rule: if it concerns a year until the 1999 (inclusive), the last two numerals from the year are used, otherwise if the year is higher or equals the 2000, so the year has a record indicated in the following examples:
 - the year **2000** has a record **A0**
 - the year **2001** has a record **A1**
 - the year **2009** has a record **A9**
 - the year **2010** has a record **B0**
 - the year **2011** has a record **B1**
 - the year **2019** has a record **B9**
 - the year **2020** has a record **C0**
 - ... and so on

Two numerals follow which contain a month and the other two contain a day of the month as well as in the previous case.

- Otherwise the program assumes the use of the previous format only days of the month shorter. The program then compensates the day of the month with the value 1.
- If even the previous rule is not found, the program will use the date of the last modification of the directory, which is provided by the operating system.

Example: the photos are saved in the directory:

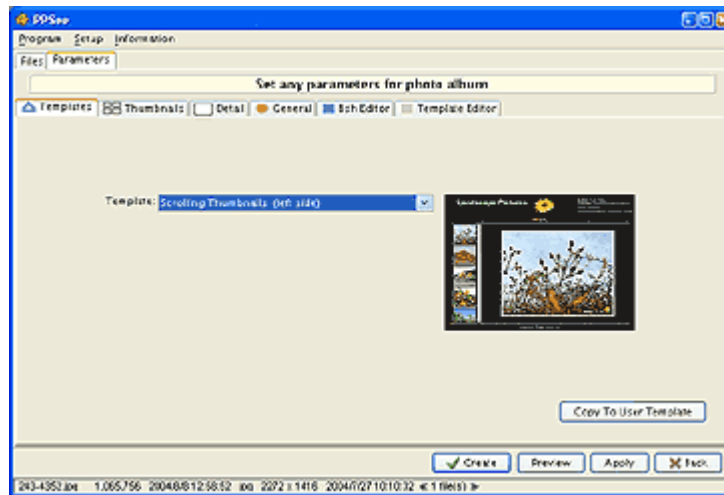
C:\DATA\20030916-Holiday\photo

The name of the parent directory is **20030916-Holiday**. The first four numerals mean the year 2003, the other two have the value 09 and the other two are 16. The date then is **16th September of the year 2003**. The equivalent name of the directory can also be **A30916-Holiday** .

Templates

By pushing the key **F5** in the picture viewing mode you will show the form, in which you can confirm your decision to create a (new) album, or you can cancel the action. The parameters can be opened also from the menu of the application: Setup -> Parameters -> HTML. There you can change the parameters affecting the look of the album. The parameters are placed on several tabs - according to the kind of use.

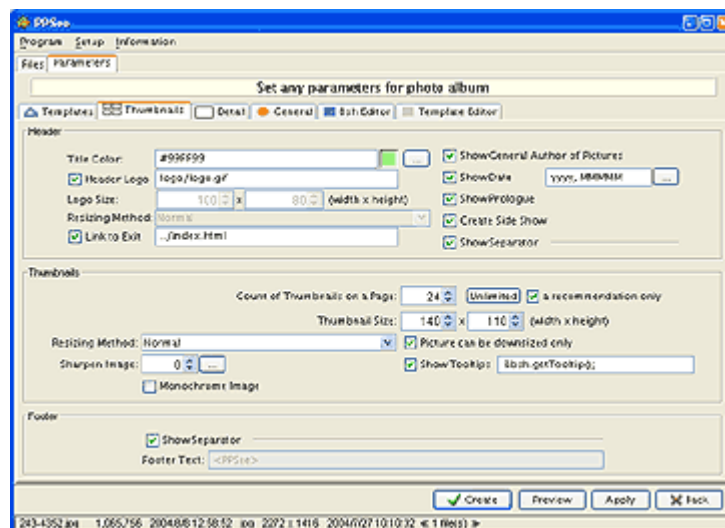
On the tab **Templates** you can choose some of the templates prepared beforehand(patterns). The template determines the layout of the pictures, buttons but also behaviour of the page on the user event. The program enables you to edit any **template** (more information [here](#)). Unless the first template is modified, it provides the same result as the template **Picture gallery**;



- Copy to User Template - any PPSee template can be modified if the template is copied into **User Template**. The one configuration file can contain the one User template only, but you can create more configuration files for more User templates.

Preview parameters

The tab of the parameters for the page of picture previews is on the following picture, the parameter description follows:



- Title Color
- Header Logo - relative way to the picture is related to the source directory. Unless the picture is found during the elaboration of the photo album, the logo will not be showed.
- Logo Size - the parameter is important for the pictures of the JPG type.
- Resizing Method - detailed interpretation is stated [here](#).
- Link to Exit - link to the exit from the photo album.
- Show General Author of Pictures - the author of the pictures of the current directory is showed in the head of the photo album.
- Show Date - contains the date of the whole directory. The description of the format is stated [here](#).
- Show Header Description - shows general description of the photo album
- Create **Slide Show** - shows the link to the page with accessible picture projection. Caution: Slide Show works only on browsers with support of the **Javascript**.
- Show Separator - the line separating the head of the album from the pictures
- Count of thumbnails on a Page - Number zero carries the meaning: unlimited image count of the first page.

- A recommendation only - the program reads previous value only as recommendation. The pictures are preferably distributed evenly to HTML pages.
- Thumbnail Size - size of small pictures. Numbers are stated in pixels and they are interpreted according to the parameter Method for the change of size.
- Resizing Method - a detailed interpretation is stated [here](#).
- Sharpen Image - positive numbers express the degree of sharpening, minus numbers the degree of picture blur.
- Picture can be downsized only - this is important only in case if you want to preserve size of small pictures.
- Show Tooltips - place the mouse pointer above the picture and brief information will appear. Content of the information can be modified via the script BSH.
- Monochrome Image - all the preview pictures will be converted to black and white.
- Show Separator - the line separating the footer of the album from the pictures.
- Footer text - text of the footer (it can not be edited in an unregistered version).

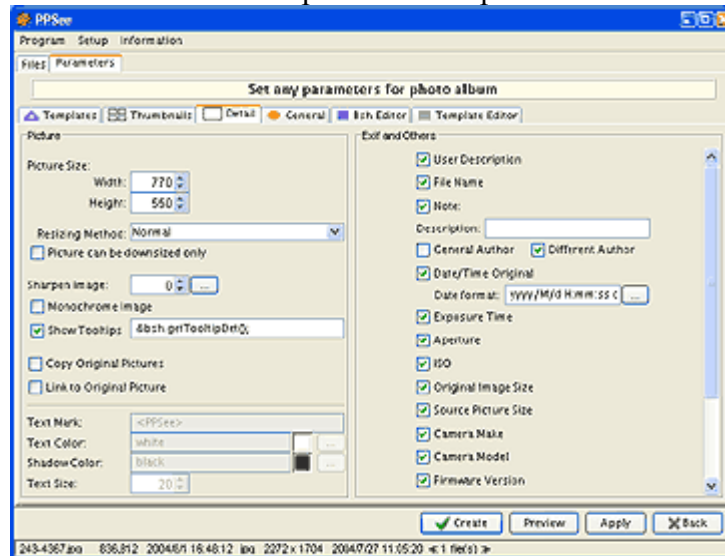
Resizing method

To change size of the picture you can choose from several methods. Unless stated otherwise, the method preserves aspect ratio of the picture, else the picture will be misshapen.

- Normal - proportions of the picture are modified so that the picture lies **inside** an imaginary rectangle. Thus mostly only one side of the picture will have the required size, the other side will be completed so that the picture is not deformed.
- Fixed Area- size is modified so that the picture covers required **area**.
- Fixed Height - size is modified according to a given height.
- Fixed Height (extended) - size is modified according to a given height; however if the picture is of the vertical type (a portrait), the height parameter is taken from the first parameter (width).
- Fixed Width - size is modified according to the given width.
- Fixed Width (extended) - size is modified according to a given width; however if the picture is of the vertical type (a portrait), the width parameter is taken from the second parameter (height).
- Fixed Width and Height by Distorting - if you want to have all the pictures of the same proportions and at the same time you do not want to miss the edges of the picture, then this is the right method.
- Fixed Width and Height by Cropping - the picture will shrink and it will be cut exactly to the required proportions.
- Fixed Width and Height by Cropping from Top - the picture will shrink and it will be cut exactly to the required proportions so that the upper side of the picture is preserved.
- Fixed W & H by Cropping and Distorting - combination of two different methods.
- Original size - size of the picture will not be modified.

Detail parameters

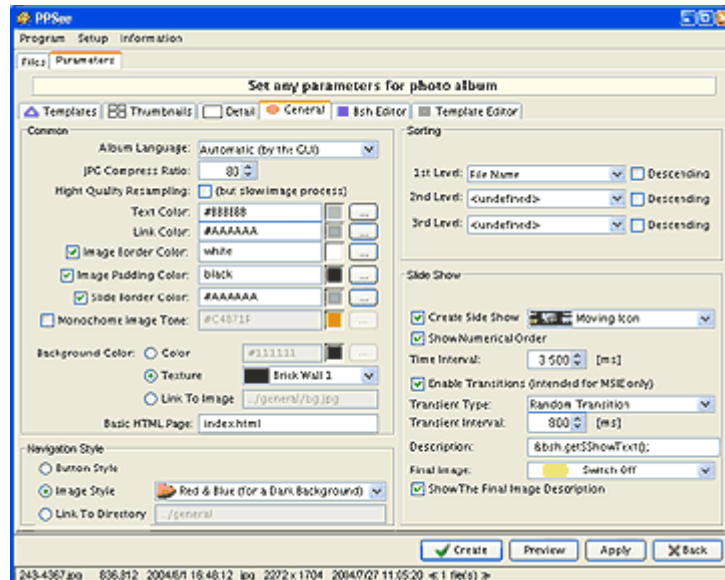
On this tab you can affect the look of the detail picture of the photo album.



- Width and Height of the picture - numbers are interpreted according to the [chosen method](#).
- Resizing Method - a more detailed comment is stated [here](#).
- Picture can be downsized only - use in case you want to preserve size of small pictures.
- Sharpen Image - positive numbers express the degree of sharpening, minus numbers the degree of picture blur.
- Monochrome Image - all the detail pictures will be converted to black and white.
- Show Tooltips - place the mouse pointer above the picture and brief information will appear. Content of the information can be modified via the script BSH.
- Copy Original Pictures - the original pictures are copied to a new subdirectory photo. If the following parameter is switched on, the link will show into this new directory.
- Link to Original Picture - under the picture there is a **relative** link to the original picture. If the previous choice (Copy Original Pictures) is switched off, the link leads to the source directory of the pictures. This combination may come in useful after burn-out on a CD.
- Text Mark - text is showed in the right bottom corner of the detail picture. The text can serve as a protection against an unauthorised use of the pictures. If you use the key word `<PPSee>`, information is showed in the picture just as it is showed in the unregistered version of the program. The text can contain calling of the BSH.
- Text Color, Shadow Color and Text Size - all these parameters are related to the previous parameter.
- User Description - shows name of the picture
- File Name - shows name of the source file.
- Note - shows content of the item *Description* as a detailed description of the picture.
- Description - an additional text, which can also contain calling of the function BSH, is located under the picture.
- General Author - shows the author assigned to the whole directory
- Different Author - author is showed only in case of being different from the author, which is assigned to the whole directory
- Rest of the parameters are EXIF information which are showed only in case if the information in the picture is accessible.
- Date format - description of the format is stated [here](#).

General parameters

On the last tab there are parameters which do not fall into any of the group of parameters mentioned above.



- Language of the photo album - affects the texts of the photo album created by the program which are to be found mainly on the introduction page. With the value *Automatically* the language will be taken over from the setting GUI (menu or parameter descriptions of the graphic interface).
- JPG Compress Ratio - higher number creates high-quality pictures which occupy more space (the time of the download from the Internet will be prolonged), on the contrary smaller number will create pictures of lesser size but also lesser quality (this choice of course does not affect the proportions of the picture :-).
- High Quality Resampling - when minimizing the picture its edges are better smoothed with better colour precision. However this parameter may prolong the time of creating the photo album twice when switched on.
- Text Color - colour of the standard text.
- Image Border Color - colour of frames of the pictures.
- Image Padding Color - colour of the background of the picture serves to create thin line around the picture.
- Slide Border Color - frame of the slide show can have its own colour.
- Monochrome Image Tone - black and white pictures can be tinted by colour. The parameter does not affect coloured pictures.
- Background Color - colour of the background of all the pictures.
- Texture - the picture which will unfold over the background of the album as tiles
- Link To Image - is designed for more advanced users who can create their own texture. The item can contain a relative link which will be used in the photo album. Consequently this choice does not copy any picture!
- Basic HTML Page - the name of the first preview of pictures of the photo album.
- Navigation Style - a group of parameters affecting the look of the navigation panel.
- Button Style - navigation elements carry the look of the classic buttons. I warn that the internet browser **Internet Explorer** works correctly only with the enabled Javascript.
- Image Style - you can choose some of the predefined sets.
- Link to Directory - amends only the stated (generally relative) link to the button set, thus the program does not copy any set of pictures. Names of buttons are firmly given and they carry the following meaning:
 - bti.gif - preview button
 - btn.gif - the following page
 - btp.gif - the previous page
 - bi.gif - preview button from the slide show

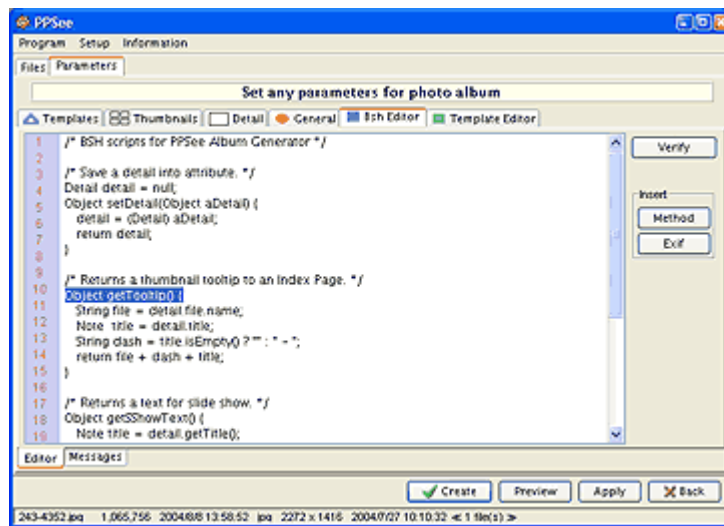
- bn.gif - another picture of the slide show
- bp.gif - the previous picture of the slide show
- bs0.gif - symbol of the stopped slide show
- bs1.gif - symbol of the running slide show
- mnu.gif - exit the photo album (e.g. return to the main menu)
- 1st Level Sorting - type of information according to which the pictures will be ranged (e.g. the name of the file).
- 2nd Level Sorting - if the line-up of the previous level is concurrent, this line-up will be of use.
- 3rd Level Sorting - if the line-up of the previous level is concurrent, this line-up will be of use.
- Descending - each of the levels can have a reversed line-up (Z-A)
- Create Slide Show - is important only for those users of the photo album with enabled **Javascript** in the internet browser. It is also possible to choose an icon for the photo album.
- Show Numerical Order - next to the title of the picture the sequence number is showed, which is in the format: **2/10**.
- Time Interval - time in milliseconds for which it will be possible to view the picture in the mode slide show.
- Enable Transitions - Permits setting of the transition effect among the individual pictures of the slide show. This feature is supported only on the newer browsers of the **Internet Explorer** type (MSIE). Unsupported browsers disregard this setting.
- Transient Type - allows to set particular transition(effect). The name Random transition chooses randomly one of the accessible transitions for each picture. The value Without transition switches the effect off.
- Transient Interval - time in milliseconds which determines the time duration of the transition. The time interval given for showing one picture is prolonged by this period.
- Description - the text which appears under the picture. The text can contain calling of the BSH script.
- Final Image - the picture with the symbol of the end of the photo album.
- Show The Final Image Description - shows text under the symbol of the last picture.

Editor BeanShell

Most of the text parameters of the photo album are also applicable to calling of the script, which you can create/modify on the independent tab in the language **BeanShell** (further only BSH).

BSH is designed mainly for advanced users, it is important because of the possibility to compile easily any text on particular places of the photo album - from accessible datas. Here are some other tips for using the script:

- possibility to obtain information from external sources (from database, file, URL, FTP)
- possibility to obtain information on settings of the program **PPSee** via its [API](#)
- possibility to obtain information on the processed picture (name, proportions, EXIF)
- information is also possible to be written into the picture in detail (only registered version)
- the script enables to create and open your own user interface (GUI) to call forth other parameters
- possibility of calling the external script BSH
- possibility of transfer of the created photo album to the internet browser (e.g. via FTP registry)



From the text item (program parameter **PPSee**) it is possible to call the BSH function by her name so that you will write into the text the expression **&bsh.myFunction()**; , where **myFunction** is your function with the return data-type Object. Calling of the function can contain one text parameter (example: **&bsh.myFunction(hallo)**);), which you will place between parentheses. An empty parameter expects the BSH function without a parameter.

The item can contain calling of more functions. The script remembers its own context, so at the beginning of the script it is possible to declare variables which the functions will approach. To set the calling of a starting or terminating function go to the panel of general parameters.

The original description of the language **BeanShell** is available in English [here](#). The author is [Pat Niemeyer](#) pat@pat.net.

Program interface

To make information on the current picture (file) accessible or to obtain settings of the parameters of the program PPSee, a **program interface** is available (further only API), whose detailed description is [here](#).

An instance of the [Api](#) class in the script and in the HTML template you will obtain via the variable **api**.

Photo album user templates

The program **PPSee** enables to change the photo album by the help of a number of parameters, however a certain style of the photo album always remains preserved. If you have your own conceptions of the look of the photo album, lay-out of the pictures, navigational buttons, picture description and so on, you can create a **template**. The template of the program **PPSee** is a model, based on which the program creates the real photo album. It is useful to know that templates - or more exactly their program accessories - enable to respect the parameters set in the user graphic environment of the program **PPSee**. To communicate with the program, templates use the program interface [API](#).

Templates can be saved - together with other parameters - for later use; users can share the saved templates with no limits.

Templates provide a potent tool, however creation of new templates requires at least basic knowledge of the HTML language, or better even knowledge of the cascade style sheets CSS. For control of the flow (condition, cycle) the BSH (BeanShell) engine is used. The basic syntax of the BSH is not very different from the JavaScript language. The original description of the language **BeanShell** is available in English

[here](#). The author is [Pat Niemeyer pat@pat.net](mailto:pat@pat.net).

Basic modifications of templates

If a certain modification of some template attracts you but the program expressions discourage you, I recommend to abide by the following rule:

When changing the content of a template avoid modification of the text closed between the symbols `<%` and `%>`.

If you abide by this rule, you will eliminate errors which come up during **photo album processing**. In practise it means that the photo album created on the template modified in this manner will be finished always correctly and you will be able to check the result only in an internet browser or in a text editor.

If the resulting look of the photo album will not correspond to your requirements, you will correct the relevant part of the template and you will create the album anew. Thus you can proceed up to the state, when the album completely corresponds to your requirements.

In conclusion I recommend to check if the created photo album has a valid (operative, correct) HTML code according to the appropriate specification of the HTML language (see <http://validator.w3.org/>).

Useful links with the description of the syntax of the language HTML and CSS are on the Internet, for example here:

- <http://www.w3schools.com>
- <http://www.htmlcodetutorial.com>
- <http://www.mcli.dist.maricopa.edu/tut/>

Extended modifications of templates

Maybe now is the time to mention that each template **PPSee** is converted to a BSH script before the photo album processing. Scripts created this way are gradually started and their result is saved to the text files, which make an important part of the photo album.

Occasionally it is useful to insert your own code of the BSH script into the template. To enable the program **PPSee** to distinguish the code of the script from the rest of the text of the template, you should delimit the code of each script by the matched symbols `<%` and `%>`.

Example:

```
<% param="Text"; %>
```

saves the word Text into the variable param.

Beside the standard services of the BSH language each script can also use additional facilities of the program **PPSee**:

- Variable [api](#). This variable is available in all templates and it is the entry gate for all other services of the program interface (API), which are provided by the environment of the program **PPSee**. The complete description of the API is stated in English [here](#).
- Name space of all the classes of API is imported into the script automatically and you can disregard this problem.
- The template commands two preset functions for entry of a parameter into the text file:
 - function: `out (param)` - enables entry of any parameter into a text file without breaking lines and
 - function: `outLn (param)` - enables the same thing including the entry of the sign for a

new line.

To simplify the entry of a variable (expression or function of the API) into the text file, a shortcut entry is available via the expression `<%= param %>`. As an example there are (from the view of the template processing) two completely equivalent expressions:

```
<% out(param); %>
<%= param %>
```

Note: entry of the BSH expressions into the template **PPSee** was inspired by the syntax of the scriptlets in the JSP (Java Server Pages).

Graphic interface

Graphic interface of the program **PPSee** contains the template editor. For each part of the photo album stands its own subtemplate, which you can choose on the tab situated on the bottom edge of the window. The template editor have got buttons, which have the following functions linked up:

- Verify – carries out the basic check of the template syntax. The check reveals only some errors - e.g. incorrect matching of compound brackets of the BSH script. To reveal the errors completely it will be necessary to create the photo album anew.
- Verify All – carries out the above mentioned check for **all** templates.
- Script – converts the chosen template to a BSH script and the result will be showed in a new window. Displaying of the script can be useful when searching for the rest of errors, because error template messages are related mainly to the code of the script.

Tips for templates:

- The template can also call the functions stated in the BSH script (see the editor on the tab of the BSH script). Context of this script is accessible throughout the creation of the photo album via the function `Api.bsh(function, parameter)`.
- For general matching of objects in the BSH language, it is necessary to use the method `equals(param)`, because the operator `==` reports correspondence only when the same instance of object (located at the same memory address) is concerned. Examples of use:
 - if the variable `param` does not contain the value `null`, you can choose the expression:

```
<%= param.equals("Text") %>
```
 - however the following expression can be considered more secure, because it works even if the variable `param` contains `null`:

```
<%= "Text".equals(param) %>
```
 - The last expression returns the value `true` only if the same instances of object are used!

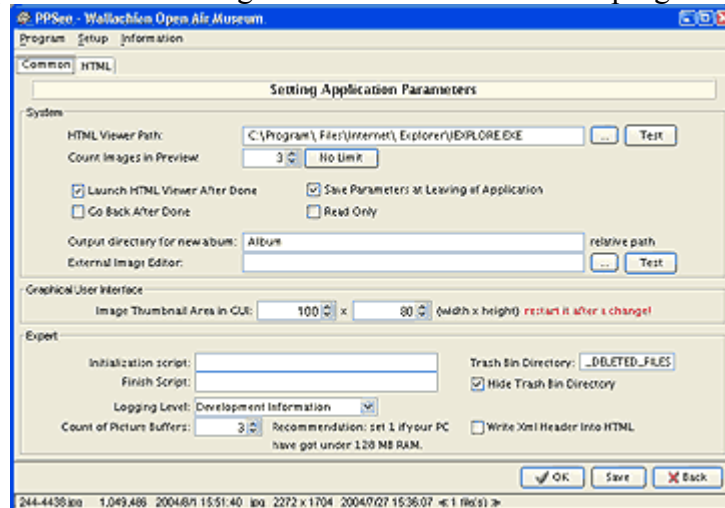
```
<%= param=="Text" %>
```
- the BSH script enables shortcut entry of the method calling in some cases. An example of complete and shortcut entry:

```
<%= api.getAlbum().getAuthor() %>
<%= api.album.author %>
```
- if you need to enter the description text into the album (including the diacritical marks, restricted HTML signs and so on.), use the instance of the object `Note`. Example:

```
<%= new Note("<Horse>") %>
```
- The quickest way to create a new template is to modify an existing template. You can modify whichever standard **PPSee** template.

Program parameters

On this tab you can set parameters affecting the behaviour of the whole program.



- HTML Viewer Path - external viewer of the photo album. To verify the correct configuration push the button **Test**
- Count Images in Preview - the number is related with the function **Preview** when creating the photo album. It determines the maximal number of pictures contained in the preview.
- Launch HTML Viewer After Done - after creating the photo album the result will be automatically showed.
- Go Back After Done - after creating the photo album return to the basic display will be carried out.
- Save Parameters At Leaving of Application - if the choice is off, parameters will be saved only at your bidding, otherwise parameters (in the registered version) will be saved automatically with termination of the program.
- Read Only - an actions like delete file, restore file or an image editing (by an external editor) are **disabled**
- Output Directory - relative way related to the source of the pictures for creating the photo album. Before the proper creation of the album there is still a continuous possibility to modify the way (directory).
- External Image Editor - can contain the absolute way to your picture editor
- Image Thumbnail Area in GUI - size of small pictures in the graphic interface of the program. I recommend to amplify these parameters carefully, they affect the memory consumption.
- Initialization Script - Calling of the function of the BSH script - before starting to create the photo album. Example of use: `&bsh.start()` ;
- Finish Script - Calling of the function of the BSH script - after completing the photo album. The script can contain for example transfer to another computer.
- Logging Level - program writes up into the file PPSee.log some conflicting situations which can be of some concern for eliminating possible errors. The parameter can set the level of relevance of these entries or it can avoid them completely. The logging file is generally replaced by an empty file the following day.
- Count of Picture Buffers - the number has an important influence on the memory consumption. The parameter determines how many pictures at once are allowed to be saved in the computer memory.
- Trash Bin Directory - the name of subdirectory, which is intended for a Trash Bin of PPSee program. All characters of the name must be valid according to your operating system.
- Hide Trash Bin Directory - the directory can be invisible from a view of PPSee.

Parameters on the HTML tab are described in detail [here](#).

Tips

Some of the following tips for using the program may come you in handy:

- The registered version of the program saves automatically its settings for later use. Automatical saving can be switched off in the program settings.
- The saved *parameters* of the program can be read to the program via the context menu on the given file (only in registered version). Automatic saving can be switched off in the program settings.
- *Descriptions* of pictures can also be modified in the dialogue for parameter settings of the photo album.
- To picture comments you can also insert **HTML symbols** (tags), however you need to limit the whole text by compound brackets according to this example:
{cranked
text}
- If you want to see the above mentioned example (including the compound brackets), insert a blank in front of the first bracket.
- Photo album parameters modified within the scope of the action *Create New Photo Album* are not saved by default. That is why it is possible to experiment at this place and finally restore all back into the original state by pushing the button *Back*.
- If you push the button *Save* at this place, it has the same meaning as in case of parameter settings in the form opened from the menu *Setup -> Parameters ...* and pushing the button *OK*. This means that parameters will be saved with the program termination (if it is not prohibited) or by the order from the menu: *Save parameters*
- Modified parameters can be restored into the original state in the graphic interface by clicking on the item with the right button of the mouse and subsequent selection from the context menu. In the case of numeral or data items, you need to click on the small button on the right side of the item (it shows the arrow up and down).
- With numeral and data items you can change their value by the mouse wheel.
- **The saved parameters** will be restored to the initial values by erasing the parameter file (standard name is *PPSee.ini*).

And what next?

Your photo album is already created and now you would like to present it somewhere on the Internet. How to do it? If you have never done this before, let yourself be inspired with the following procedure (advanced users can leave this chapter out). It is not a comprehensive procedure, more likely it is only a basic description of recommended steps.

1. Choose a provider which offers space on an internet server. Occasionally this service is provided only at the cost of advertisements which the provider will place (in accordance with some rules) in your photo album.
For fee you can then (generally) have the assigned space enlarged or you can get rid of the advertisements. More exacting users can pay extra for their own name of the Internet page in the style of: www.mypages.cz .
2. A list of providers of Internet pages can be obtained e.g. by an internet browser www.google.com after giving the pattern *free web hosting* or *"your country" free web hosting*.
When registering, follow advice of the given provider.
3. So if you manage to complete your registration successfully, you need to copy your photo album on your internet server. For this you will need a program which can copy files via the (so-called) FTP protocol. There are many programs of this kind and some are available for free.
From the commercial programs for Windows is popular e.g. **Total Commander**, of freeware I recommend to try the program **FileZilla**.

An offer of other programs you can find for example here:

- <http://www.download.com/>
- <http://www.twocows.com/>

Users of OS Linux have a program for transfer via FTP protocol integrated like a standard facility of tools KDE or GNOME.

4. If you have installed a program for file transfer, you need to set the parameters for connection to your WEB server. Generally the following specifications are concerned:
 - **Name** - descriptonal text just for your orientation
 - **FTP Server** a **Port** - these two specifications you probably obtained when registering the space on an internet server
 - **User** - the user name (login) which you used when registering
 - **Password** - a password which will either be assigned to you by the provider or which you will choose yourself.

Fortunately most programs remember these specifications and it is not necessary to insert the above mentioned data again at the next access.

5. Now what is left is only to copy your photo album. Most FTP programs with graphic interface has transcendental operating and copying should not be difficult. After the transfer what remains is to open the result of your efforts by the help of an internet browser :-).

Technical Support

If you have a problem you can send a question to technical support by e-mail ppsee@centrum.cz. In the case - write a keyword **SUPPORT** in a Subject of the message, please. Unregistered users have no guaranteed support.

Thank you for any bug notification related to program **PPSee** or HTML image gallery. In case you have found a bug, send me an e-mail to ppsee@centrum.cz with a subject **BUG** and concise bug description include a step performance.

Disadvantages

To prevent undue optimism :-)) I will warn you here of the features which could be a source of unpleasant surprise when using this program:

- greater requirements for the computer memory (256MB RAM is recommended) and performance of the computer (sensible minimum is 700 MHz).
- a need to install the JRE environment (file for download has a size of approximately 15MB). However lately the JRE environment is beginning to appear as a part of some operating systems (e.g. Linux). In some cases this library is already installed by computer vendors. Moreover once installed, the JRE environment can also use other Java programs. Links to some useful Java programs are mentioned on the [homepage](#) of the program **PPSee**.
- The program does not guarantee the accessibility of all EXIF information from all producers of the digital camera. The program was tested on the pictures taken by the cameras Canon, Olympus and Sony. Before buying the licence I therefore recommend to check the accessibility of EXIF information for your particular camera!

Further development

With some measure of probability it can be expected that further development of the program will go this way:

- offer of more types of templates for the photo album
- gradual extension of the offer of navigation keys and textures for background
- translation of the user interface into other languages.
- printing tasks

Licence and price



- You can use the program for private and commercial purpose without time restriction.
- It is prohibited to decompile the program or to modify it in any other way.
- It is prohibited to distribute the file with the registered licence without the consent of the author.
- If you want to take some advantages of the font **PPSee**, you will need to buy the registration for the program.

[Buy now from Kagi](http://order.kagi.com/?6FARV(=en)) ([http://order.kagi.com/?6FARV\(=en\)](http://order.kagi.com/?6FARV(=en))) . Kagi, our reseller, accepts American Express, Cart Blanche, Diner's Club, Discover, EuroCard, JCB, Optima, Nova, MasterCard and Visa credit and debit cards. The **price** of the licence is stated on the homepage of the program: <http://pponec.net/ppsee/> too.

The purchased licence allows to you:

- to save all parameters
- to remove a watermark from detail pictures in the album
- to call the program in a batch mode from a command line
- and some more advantages.

The licence further entitles you to use these advantages in all **newer versions** of the program **PPSee** for the period three years.

By buying the licence you will support further development of this program!

Registration

See home page (<http://pponec.net/ppsee/>) for pricing and registration informations, please.

Procedure of the program registration is following:

1. The licence file **Licence.lic** save on the haddisk of your computer
2. Start the program **PPSee**
3. In the menu open: **Information** -> **On licence ..**
4. In the form you will enter your e-mail and you will insert the place where to save the file **Licence.lic**
5. Push gradually the buttons **Verify** a **OK**
6. From this moment the registration is finished and you can use the program.

7. After the switch-over to the newer version of the program, you will need to repeat the mentioned steps.

Elaborated by the author: *Pavel Ponec* (ppsee@centrum.cz)